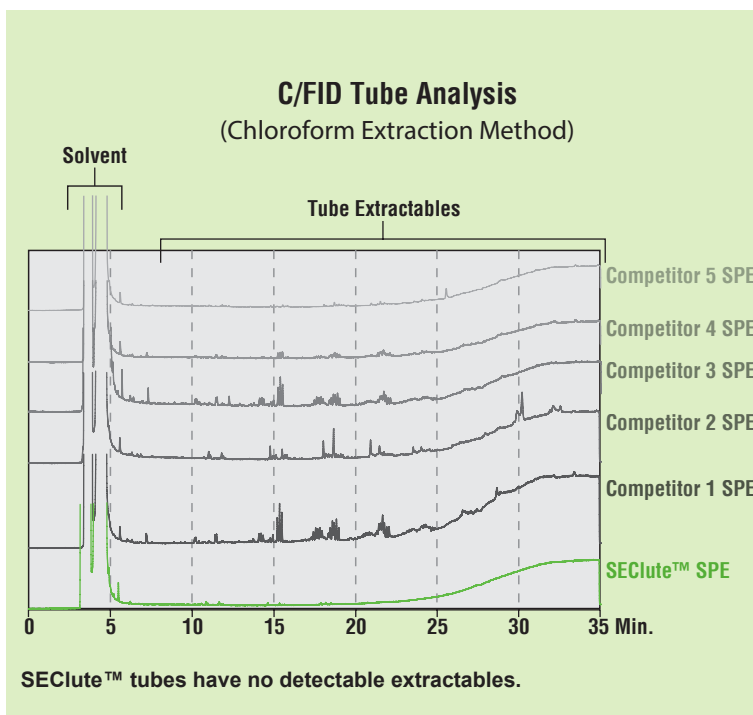


## SEClute™ SPE Columns

For the Clean-up, Concentration and Recovery of Chromatography Samples

- **Clean** — Extractable-free, medical grade polypropylene tubes, and ultra-pure silica
- **Reproducible** — Devices subjected to over 20 performance criteria, and guaranteed to have less than 2% bed weight variation
- **Reliable** — 30 years SPE industry experience, comprehensive technical support, and ISO 9001-2008 certified



### SEClute™ Reversed-Phase and Normal-Phase Specifications

Sorbent	Support	Carbon (%)	Endcapping	Surface Area (m <sup>2</sup> /g)	Particle Size (µm)	Pore Size (Å)	Features and Benefits
C18-Max	Silica	17.1	Yes	518	50	60	Polymerically bonded with highest binding capacity. Best for complex samples or structurally diverse analytes.
C18-Aq	Silica	12.5	Yes	518	50	60	Water-wettable C18 ideal for aqueous samples. Phase remains active even when completely dry.
C18-Low	Silica	6.5	Yes	518	50	60	Lowest carbon-load C18 phase that easily releases very hydrophobic compounds. Use for surfactants, oils, antibiotics.
C18-Fast	Silica	7.0	Yes	518	100	60	Large 100µm particle processes large volume (>500mL) or viscous samples with fast flow rates. Ideal for aniline, pesticides, haloethers, phthalate esters, EPA 3620, 3610.
Silica	Silica	N/A	N/A	518	50	60	Most polar phase is able to differentiate between structurally similar compounds. Use for aflatoxins, pesticides, steroids, structural isomers.
Amino	Silica	4.3	No	518	50	60	Retains polar compounds, or can act as a weak anion exchanger. Easily releases strong acids when SAX binds too strongly. Use for carbohydrates, dyes, lipids, mycotoxins, strong acids.
Diol	Silica	N/A	No	518	50	60	Very polar phase that has the same benefits as silica, but wets easily and offers more reproducibility.
Florisil®	Magnesium Silicate	N/A	No	-	120	60	Alternative Polar Phase for Environmental Samples. Large Particle size processes samples quickly.

### SEClute™ Polymer Ion-Exchange Phase Specifications

Sorbent	Support	Exchange Capacity (meq/g)	Counter Ion	Particle Size (µm)	Features and Benefits
Anion-X	8% cross-linked styrene-divinylbenzene	1.5	Acetate form	50	Tetramethyl ammonium functional group. Retains anionic compounds (organic acids, fatty acids). pH range from 1–14.
Cation-X	8% cross-linked styrene-divinylbenzene	2.4	Hydrogen form	50	Benzene sulfonic acid functional group. Retains cationic compounds (amines, amino acids). pH range from 1–14.

## Phase Tradename Cross Reference

Try SEClute™ Phase	If you use:				
	Varian® Bond Elut®	Waters® Sep-Pak®	Phenomenex® Strata™	Supelco® Discovery®, Supelclean™	JT Baker Bakerbond™
C18-Max	C18	tC18	C18-E	DSC-18	Octadecyl
C18-Aq	C18OH	C18	C18-U	DSC-18Lt	Octadecyl lightload
C18-Low	N/A	N/A	N/A	LC-18	N/A
C18-Fast	N/A	N/A	N/A	N/A	N/A
Silica	LC-Si	Silica	Si-1	DSC-Si or LC-Si	Silica Gel
Amino	NH2	NH2	NH2	LC-NH2	Amino
Diol	2OH	Diol	N/A	DSC-Diol or LC-Diol	N/A
Anion-X	SAX	N/A	SAX	DSC-SAX or LC-SAX	Quaternary Amine
Cation-X	SCX	N/A	SCX	DSC-SCX or LC-SCX	Aromatic Sulfonic Acid

### SEClute™ Reversed-Phase SPE Columns

Sorbent	Bed Weight	Column Volume	Qty.	Part No.
<b>C18-Max</b>	50mg	1mL	100pk	<b>5141484</b>
	100mg	1mL	100pk	<b>5138765</b>
	500mg	3mL	50pk	<b>5138766</b>
	500mg	6mL	30pk	<b>5138767</b>
	1000mg	6mL	30pk	<b>5138768</b>
	2000mg	20mL	20pk	<b>5141525</b>
<b>C18-Aq</b>	5000mg	20mL	20pk	<b>5141524</b>
	50mg	1mL	100pk	<b>5141486</b>
	100mg	1mL	100pk	<b>5138774</b>
	500mg	3mL	50pk	<b>5138775</b>
	1000mg	6mL	30pk	<b>5138776</b>
	2000mg	12mL	30pk	<b>5141482</b>
<b>C18-Low</b>	5000mg	20mL	20pk	<b>5141523</b>
	5000mg	20mL	30pk	<b>5141489</b>
	100mg	1mL	100pk	<b>5138760</b>
	200mg	3mL	50pk	<b>5138761</b>
	500mg	3mL	50pk	<b>5138762</b>
	500mg	6mL	30pk	<b>5138763</b>
<b>C18-Fast</b>	1000mg	6mL	30pk	<b>5138764</b>
	5000mg	20mL	20pk	<b>5141526</b>
	500mg	3mL	50pk	<b>5138758</b>
	1000mg	6mL	30pk	<b>5138759</b>
5000mg	20mL	20pk	<b>5141527</b>	

### SEClute™ Normal-Phase SPE Columns

Sorbent	Bed Weight	Column Volume	Qty.	Part No.	
<b>Silica</b>	100mg	1mL	100pk	<b>5138777</b>	
	200mg	3mL	50pk	<b>5138778</b>	
	500mg	3mL	50pk	<b>5138779</b>	
	5000mg	20mL	20pk	<b>5138780</b>	
	500mg	6mL	30pk	<b>5138781</b>	
	1000mg	6mL	30pk	<b>5138782</b>	
	2000mg	12mL	30pk	<b>5138783</b>	
	10000mg	60mL	16pk	<b>5138784</b>	
	<b>Amino</b>	500mg	3mL	50pk	<b>5138752</b>
		1000mg	6mL	30pk	<b>5138753</b>
<b>Diol</b>	100mg	1mL	100pk	<b>5138771</b>	
	200mg	3mL	50pk	<b>5138772</b>	
	500mg	3mL	50pk	<b>5138773</b>	
<b>Florisil®</b>	500mg	3mL	50pk	<b>5141522</b>	
	1000mg	6mL	30pk	<b>5141520</b>	
	2000mg	12mL	30pk	<b>5141521</b>	

### SEClute™ Polymer Ion-Exchange SPE Columns

Sorbent	Bed Weight	Column Volume	Qty.	Part No.
<b>Anion-X</b>	100mg	1mL	100pk	<b>5138754</b>
	500mg	3mL	50pk	<b>5138755</b>
	1000mg	3mL	50pk	<b>5141487</b>
<b>Cation-X</b>	100mg	1mL	100pk	<b>5138769</b>
	500mg	3mL	50pk	<b>5138770</b>
	1000mg	3mL	50pk	<b>5141488</b>

## SPE Vacuum Manifolds

### Vacuum Manifold Components

- |                           |   |
|---------------------------|---|
| A. Glass Chamber          | F. Support Posts for Collection Racks   |
| B. Vacuum Valve and Gauge | G. Retaining Clips for Collection Racks |
| C. Polypropylene Lid      | H. Lid Legs                             |
| D. Stopcock Valves        | I. Manifold Inlet Caps                  |
| E. Collection Rack Plates | J. Polypropylene Needles                |

### 24-Port Manifold and Accessories

Description	Qty.	Part No.
<b>24-Port Vacuum Manifold*</b>	ea	<b>5122426</b>
<b>Replacement Parts</b>		
Lid, Gaskets, and 24 Stopcocks	ea	<b>8604549</b>
Vacuum Gauge, Valve, and Glass Chamber	ea	<b>8604540</b>
Collection Rack	ea	<b>8604542</b>
Gaskets	2	<b>2106735</b>
One-Way Stopcocks	24	<b>2106747</b>

\*12-Port also available

