

# S\*PURE Application Note - Environmental

## Chlorinated Pesticides in Soil

On SEClute SPE Column



### SPE Conditions

Procedure using SEClute™ C18-Max SPE tube, 500mg/6mL (Part #5138767)

Sample Treatment: Weighed out 5 grams dry soil, spike with 1µg each of 16 chlorinated pesticides, add added 25mL methanol and homogenize. Filter with 75mL filter column (Part #210775). Dilute to 200mL with DI water and shake.

Conditioning: 2 x 5mL methanol, then 5mL DI water.

Sample Application: Attach 75mL reservoir (Part #210575) with a syringe adapter (Part #210705) and apply entire sample.

Elution: Elute chlorinated pesticides with 2 x 1mL n-hexane/CH<sub>2</sub>Cl<sub>2</sub> (70:30), evaporate to dryness and reconstitute with 1mL iso-octane.

### GC Conditions

Capillary column (Part #15807), AT™ 5ms, 30m x 0.25mm i.d., 0.25µm film thickness.

Oven: 80°C (1min) to 100°C at 15°C/min, to 160°C at 10°C/min, to 275°C at 5°C/min, column head pressure at 14.0psi on the EPC-1000, dead time of 1.91 minutes

Linear Velocity: 26cm/sec

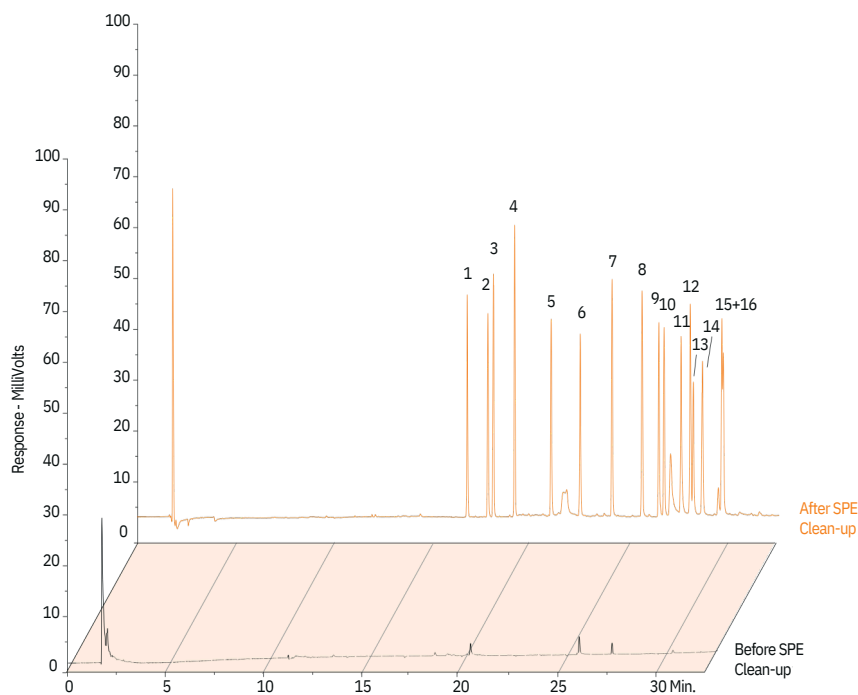
Flow: 0.77mL/minute

Split Vent Flow: 50mL/minute

Split Ratio: 65:1

Injector: 250°C

ECD: 310



- |                       |                        |
|-----------------------|------------------------|
| 1. a-BHC              | 9. p,p'-DDE            |
| 2. b-BHC              | 10. Dieldrin           |
| 3. g-BHC              | 11. Endrin             |
| 4. d-BHC              | 12. Endosulfan II      |
| 5. Heptachlor         | 13. p,p'-DDD           |
| 6. Aldrin             | 14. Endrin Aldehyde    |
| 7. Heptachlor Epoxide | 15. p,p'-DDT           |
| 8. Endosulfan I       | 16. Endosulfan Sulfate |

[www.sstarpure.com](http://www.sstarpure.com)

AT™ is a trademark of Alltech Associates, Inc. GRACE® and GRACE DAVISON® are trademarks, registered in the United States and/or other countries, of W. R. Grace & Co.-Conn. SEClute™ is a trademark of S\*Pure Pte Ltd, Singapore. This trademark list has been compiled using available published information as of the publication date of this brochure and may not accurately reflect current trademark ownership. All rights reserved. The information presented herein is derived from our testing and experience. It is offered for your consideration and verification. Since operating conditions vary significantly, and are not under our control, we disclaim all warranties on the results that may be obtained from the use of our products. S\*Pure reserves the right to change prices and/or specifications without prior notification.

2024-08, M205

S\*Pure Pte Ltd

55 Toh Guan Road East

#03-05 Unitech Centre

Singapore 608601

Tel: +65 6563 3901

Email: [corporate@sstarpure.com](mailto:corporate@sstarpure.com)